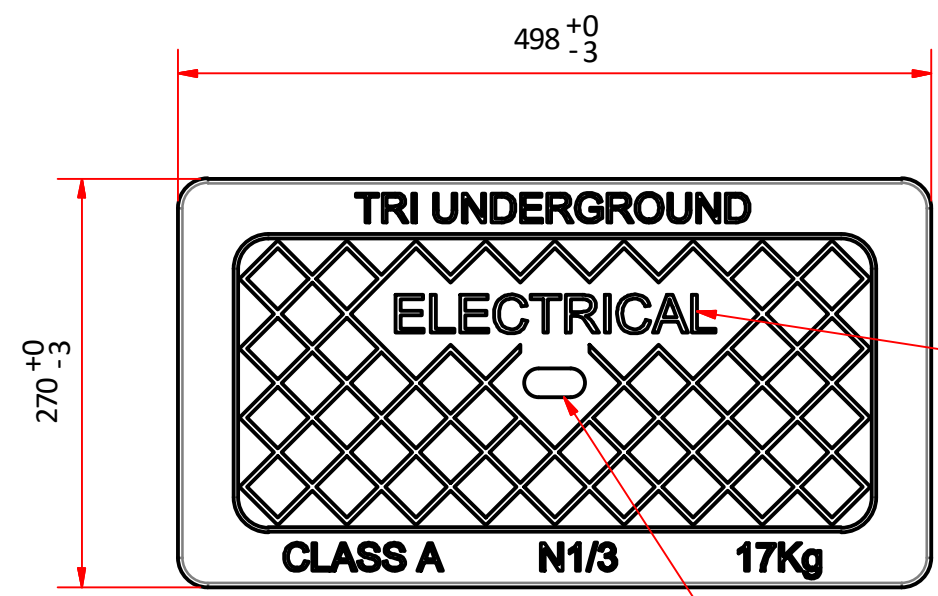
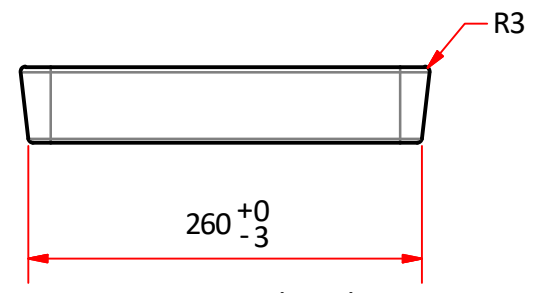


- NOTES:
- 1. MEETS CLASS A DESIGN LOADS AS PER AS3996:2019
  - 2. ALL LIDS TO BE MARKED AS INDICATED  
2 mm NOMINAL DEPTH
  - 3. CONCRETE STRENGTH 40 MPa

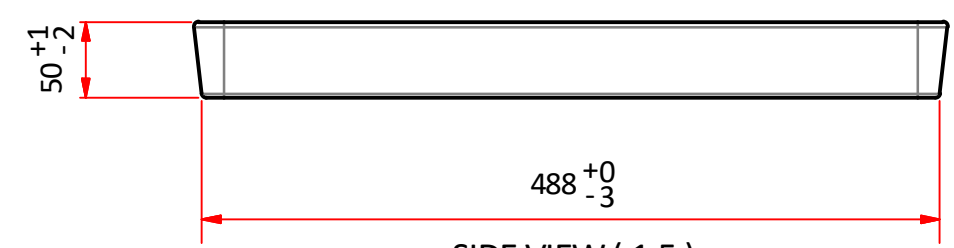


LABEL VARIANTS;  
1. ELECTRICAL (TRI UNDERGROUND CODE 10349)  
2. COMMUNICATIONS (TRI UNDERGROUND CODE 10350)

TOP VIEW ( 1:5 )



END VIEW ( 1:5 )



SIDE VIEW ( 1:5 )

- General Notes;
- 1. All dimensions are in mm
  - 2. Tolerance on all dimensions  $\pm 3$  mm unless stated otherwise

Copyright: TRI Underground Australia Pty Ltd

This instruction and all the information herein is the property of TRI Underground PTY LTD. It must not be copied, made public or used directly or indirectly, including manufacture of the product shown herein, without written approval. This instruction is loaned subject to these conditions and subject to return on demand.

Commercial in confidence

	Material CONCRETE	Designed by IMD	Checked by HL	Approved by HA	Date 23/03/2022	Date 22/01/2022	
	Weight APPROX. 17 kg	TRI Underground Australia			Title CONCRETE COVER N1/3		
	Finish OFF MOULD				Dwg No. 10349	Edition A	Sheet 1 / 1